

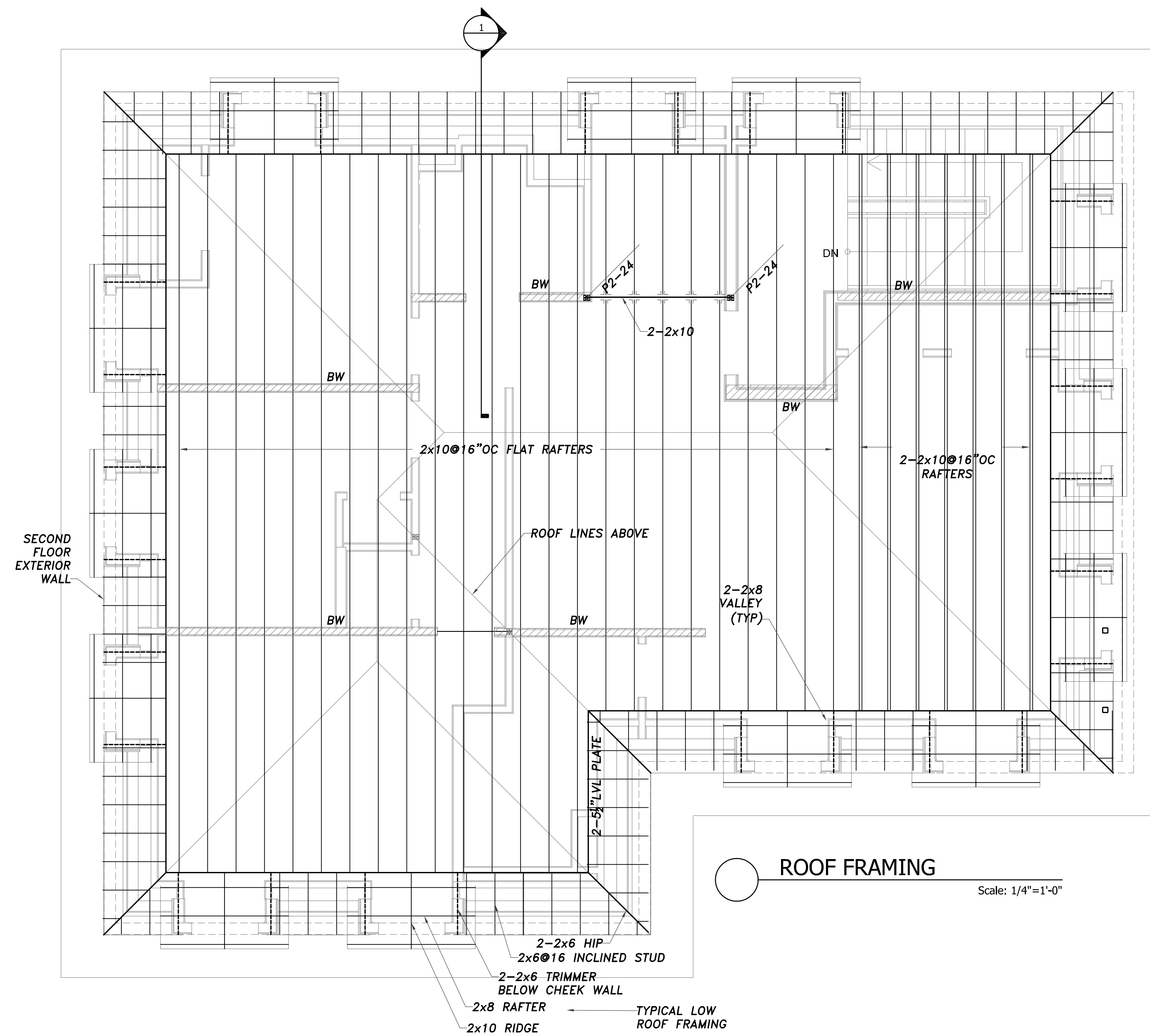
NOTES

- ALL INDIVIDUAL LVLS ARE 1 3/4" THICK UNLESS NOTED OTHERWISE ON PLAN.
- HEADERS ARE AS FOLLOWS UNLESS NOTED OTHERWISE:
3-2x8
- BEAMS COMPRISED OF 3 LVLS OR MORE SHALL BE BOLTED TOGETHER WITH A MINIMUM OF 2-1/2" BOLTS AT 16" ON CENTER OR 3-3/4" DIAMETER SELF TAPPING LAG SCREWS AT 16" ON CENTER, ALTERNATING INSERTION SIDES, FOLLOW MANUF. SPECS, UNLESS NOTED OTHERWISE ON DRAWING.
- BW DENOTES BEARING WALLS CONSISTING OF 2x8@16" OC. SEE FRAMING NOTES FOR HORIZ. BRACING.

NOTE:
REFER TO MNFR SPECS FOR ADD'L INFORMATION.

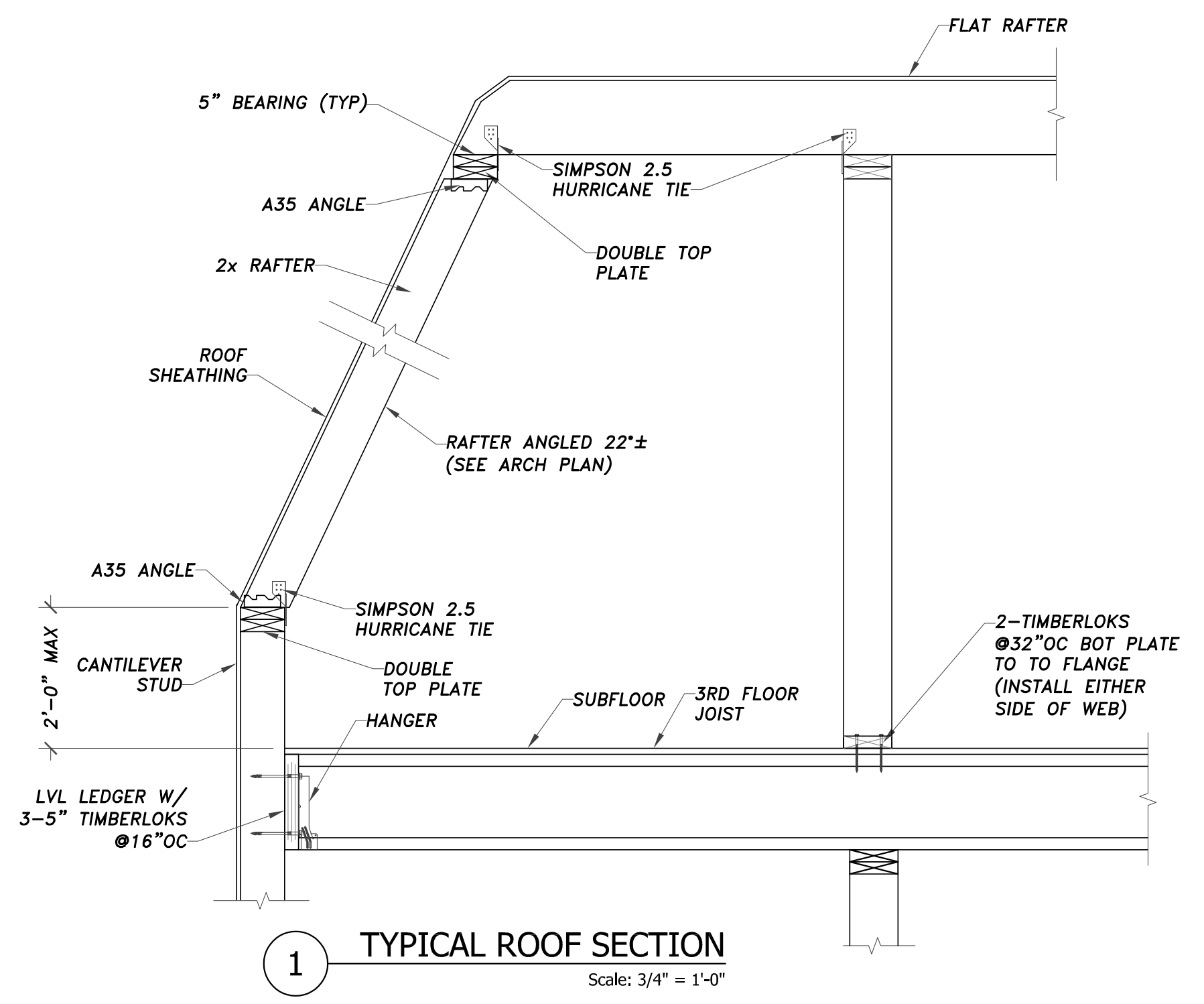
LEGEND

BW	= BEARING WALL
FVP	= FLAT VALLEY PLATE
(E)	= EXISTING
(N)	= NEW
TBR	= TO BE REMOVED
POST LOCATION	POST UP (ABOVE LINE) / POST DOWN (BELOW LINE)
DIM. LUMBER POST	NUMBER OF STUDS
P3-26	SIZE OF STUD
TYPE OF POST:	P-POST, J-JACK
ENGINEERED POST	LC 3 1/2" SIZE
TYPE OF POST:	VC-YERSA COLUMN, LC-LALLY COLUMN, HSS-TUBE STEEL



1 ROOF FRAMING
Scale: 1/4" = 1'-0"

- NOTES
1. ALL RAFTERS TO BE 2x10@16"OC
 2. ALL RAFTER TO HIP OR VALLEY CONNECTION TO BE MADE W/ A MINIMUM OF 6-12d NAILS.
 3. PROVIDE SIMPSON H2.5 HURRICANE TIES CONNECTING EACH RAFTER TO STRUCTURE BELOW.



1 TYPICAL ROOF SECTION
Scale: 3/4" = 1'-0"

LEGEND

BW = BEARING WALL
 FVP = FLAT VALLEY PLATE
 (E) = EXISTING
 (N) = NEW
 TBR = TO BE REMOVED

POST LOCATION	POST UP (ABOVE LINE)	POST DOWN (BELOW LINE)
DIM. LUMBER POST	NUMBER OF STUDS	SIZE OF STUD
P3-26		
TYPE OF POST: P-POST, J-JACK,		
ENGINEERED POST		
LC 3 1/2"	SIZE	
TYPE OF POST: VC-VERSA COLUMN, LC-LALLY COLUMN, HSS-TUBE STEEL		